



U-SERIES

DUCTLESS MINI SPLITS

POWERFUL 1:1 SYSTEMS
FOR LIGHT COMMERCIAL &
RESIDENTIAL USE

HIGH STATIC, SLIM DUCT SYSTEMS

GREECOMFORT.COM

U-Match



Ceiling Cassette

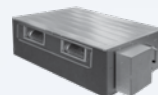
Slim Duct



High Wall

Floor-Ceiling

U-Match+



36K - 42K BTU

18K BTU



48K BTU

24K - 30K BTU

Key Features	U-MATCH	U-MATCH+
Cooling Capacity	5,400 - 54,500	5,400 - 50,000
Heating Capacity	4,700 - 61,500	4,700 - 58,000
Cooling Temperature Range	0°F - 118°F	0°F - 115°F
Heating Temperature Range	0°F - 75°F	0°F - 75°F
SEER/EER	16 - 20/8.7 - 11	16/8.3 - 11
HSPF/COP	9 - 10/2.7 - 3.54	9/2.95 - 3.53
Maximum Line Length -164 ft.	18K - 42K	18K - 30K
Maximum Line Length -230 ft.	48K	36K - 48K
Maximum Elevation - ft.	49	49
Energy Star	No	No
Compressor Type	G10 INVERTER-DRIVEN ROTARY	
OD Sound Pressure Level dB(A)	56 - 63	55 - 61
Indoor Unit Configurations	3	1
High Static Slim Duct	No	Yes
Slim Duct	Yes	No
Cassette	Yes	No
Floor-Ceiling	Yes	No
Airflow (Max)	Varies by Configuration	705 - 1350
IAQ Filters- Ducted Only	External - Field Supplied	External - Field Supplied
Energy Saving Function	No	No
Electric Basepan Heater	Yes	Yes
Compressor with Electric Heater	Yes	Yes
Low Voltage Start-Up	Yes	Yes
Intelligent Defrost	Yes	Yes
Intelligent Pre-Heating	Yes	Yes
Multi Fan Speeds	Yes	Yes
Power Supply	208-230V/1/60Hz	

GREE HEAT PUMPS, POWERED BY NEEDS.



- High efficiency
- Engineered to reduce vibration
- Variable speed for precise control
- Protection against power surges
- Programmable sleep mode for near silent operation

