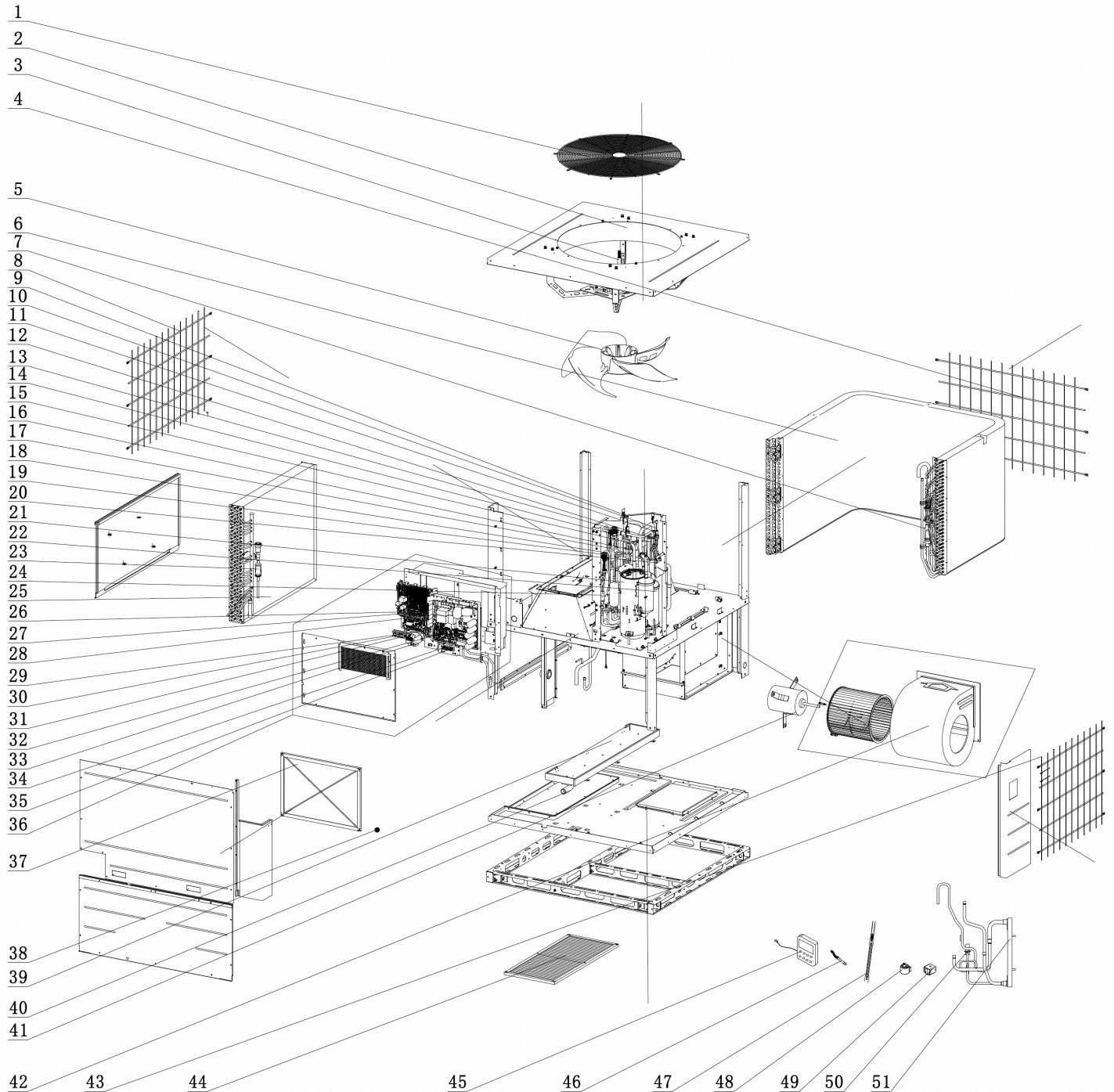


EXPLODED VIEW

GK-H05TC/NaA-T(U)



GK-H05TC/NAA-T(U)

No.	Part Description	Qty	Part Code
NS	Chassis Assy	1	209058060364
NS	Chassis Sub-Assy	1	017000060909P01
NS	Air Flue Assy	1	000011060220
NS	Air Flue Assy	1	000011060221
NS	Joint	1	06658000008
42	Centrifugal Fan Housing	1	1570220301
41	Brushless DC Motor/Blower	1	15010400001303
10	Water Tray	1	012122061115
11	Drainage Hose	1	012146060040
38	Choke Plug	1	76718209
13	Evaporator Assy	1	011001062607
14	Gas Tube Filter	1	072190512
NS	Capillary tube	1	81020167
16	Current Divider	1	035032060001
17	Nut with Washer	6	70310014
NS	Tube Clip	1	021400053P
NS	Plate-type Heat Exchanger Sub-Assy (1)	1	030166060378
NS	Plate-type Heat Exchanger Sub-Assy	1	030166060379
51	Plate-type Heat Exchanger	1	00904100004
50	Electronic Expansion Valve(B) 1.8C-027/(TS1)	1	072009060011
NS	Nut with Washer	2	70310011
48	Electronic Expansion Valve Coil UKV	1	4304413256
22	Gas-liquid Separator	1	035027060001
21	Compressor and fittings (QXAT-F400ZN450)	1	009001060980
47	Electrical Heater (Compressor)	1	7651521216
20	Nozzle for adding freon (R407C)	1	06120012
NS	Joint	1	06652200001
11	fusible plug	1	035222000004
10	Pressure sensor (low pressure) 45CP2-5	1	32210100
NS	Temp Sensor Sleeving	1	05210001
15	4-Way Valve SHF20 R410A	1	43000338
12	Nozzle for adding freon (R407C)	1	06120012
35	Pressure Protect Switch YKB-4.2/3.6C	1	4602000910
49	4 Way Valve Coil 208-230v/60Hz-1500	1	07201006000601
9	Pressure sensor (high pressure) 45CP2-6	1	32210103
NS	Electric Heater (chassis)	1	7651000425
6	Condenser Assy	1	000100060611
NS	Condenser Assy	1	011002062196
NS	Current Divider	2	04414155
NS	Capillary tube	1	81020241
NS	Current Divider	1	035032060033
NS	Capillary tube	5	81020167
7	Bidirectional Strainer	1	0721004401
17	One Way Valve	1	071001060011
35	Electronic Expansion Valve DPF(TS2) 3.0C-01	1	43005018
24	Strainer	2	035021060018
48	Electronic Expansion Valve Coil UKV	1	4300034502

GK-H05TC/NAA-T(U)

No.	Parts Description	Qty	Part Code
4	Rear Grille (1)	1	01600106012101
8	Rear Grille (2)	1	01600106012301
43	Rear Grille (3)	1	01600106012201
NS	Sponge (Rear Grill)	12	12204221
20	Nozzle for adding freon (R410A)	1	06135201
36	Electrical box component (5 Ton)	1	100002078181
32	Main Board (ZQ1230G-1) (AP1)	1	300027063061
NS	Wiring Terminal (3)	1	42010264
NS	Relay 30A 277VAC/12VDC	1	4402800001001
29	Terminal Board (2)	1	42011103
NS	Terminal Board (3)	1	42011147
27	Radiator SRX48D164	1	43003406003306
NS	Sponge	1	110000062165
28	Fan Board ZS3210C (AP2)	1	300094000052
33	Transformer	1	43110286
34	Terminal Board (2)	1	42200006001202
62	Main Board (WZ4K35AA) (AP3)	1	300027061434
NS	High frequency Transformer (ED26-14Pa)	1	450003060021
30	Terminal Board (6)	1	4201025502
31	Terminal Board (4)	1	42200006005405
NS	Jumper (Blue)	1	4202021902
46	Sensor Sub-Assy	1	390002060379
14	Electronic Expansion Valve (DPF(B) 3.2C-01514	1	072009060008
17	One Way Valve	1	071001060011
24	Strainer	2	035021060018
13	Electronic Expansion Valve Coil	1	07200206002342
37	Filter Sub-Assy	1	111001060400
44	Filter Sub-Assy	1	111001060370
NS	Top Cover Assy	1	000097060557
2	Diversion Circle	1	012193060010P01
NS	Diversion Circle	1	012193060010
3	Brushless DC Motor/Condenser (SWZ750B)	1	1570411901
NS	Top Cover Board Sub-Assy	1	017011060219P01
5	Axial Flow Fan	1	103002000007
NS	Axial Flow Fan nesting	1	02204102
4	Rear Grill	1	016001060151
45	Display Board (Z4K351GJ)	1	300001000204
NS	Panel	1	26904100100
NS	WHITE)	1	3900800014701

GREE ELECTRIC APPLIANCES INC. OF ZHUHAI
GREECOMFORT.COM