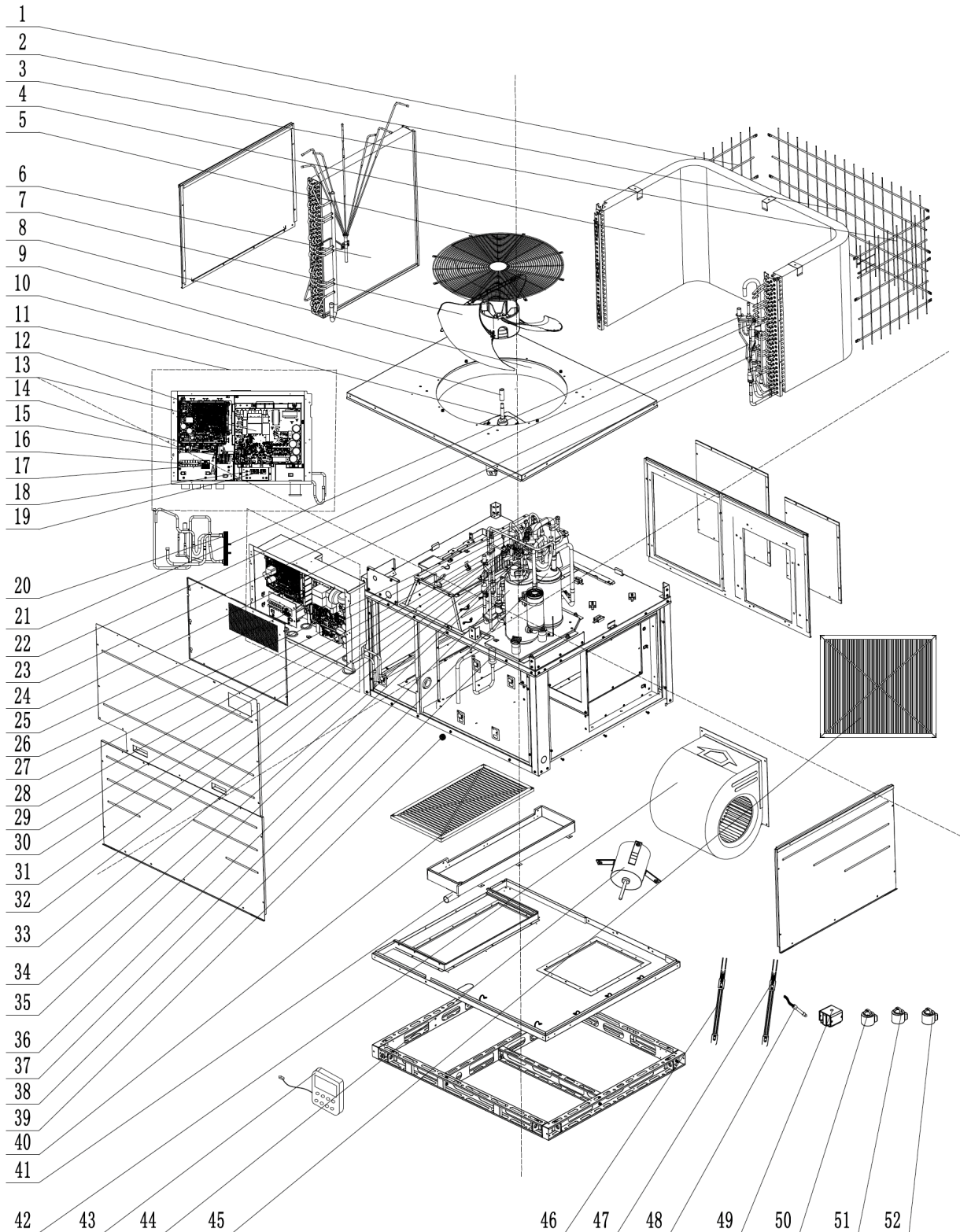


EXPLODED VIEW

GK-H02TC/NaA-T(U)



GK-02TC/NAA-T(U)

No.	Part Description	Qty.	Part Code
NS	Joint	1	06658000008
42	Centrifugal Fan Housing	1	1570220301
44	Brushless DC Motor/Blower	1	15010400001403
41	Drainage Hose	1	012146060040
39	Choke Plug	1	76718209
6	Evaporator Assy	1	011001062845
NS	Capillary tube	2	81020167
45	Filter Sub-Assy	1	111001060292
40	Filter Sub-Assy	1	111001060417
36	Compressor and Fittings	1	009001060517ST
47	Electrical Heater (Compressor)	1	7651521215
37	Gas-liquid Separator	1	035027060001
38	Gas Tube Filter	1	072190512
NS	Tube Clip	1	021400054P
20	Plate-type Heat Exchanger	1	010007060010
NS	Temp Sensor Sleeving	2	05212423
35	Electronic Expansion Valve	1	072009060033
52	Electric Expand Valve Fitting	1	4304413256
NS	Temp Sensor Sleeving	1	05212423
28	4-way Valve	1	4300008201
NS	Temp Sensor Sleeving	1	05210001
34	Pressure Protect Switch	1	4602000919
33	Nozzle for Adding Freon	1	06120012
49	4 Way Valve Coil	1	07201006000601
27	Pressure Sensor	1	32210103
NS	Joint	1	06652200001
33	Nozzle for Adding Freon	1	0612001202
26	Pressure Sensor	1	32210100
30	fusible plug	1	035222000004
4	Condenser Assy	1	011002062338
NS	Current Divider	2	04414155
24	Bidirectional Strainer	1	0721004401

GK-02TC/NAA-T(U)

No.	Part Description	Qty	Part Code
31	Nozzle for Adding Freon	1	06135201
35	Electronic Expansion Valve	1	072009060018
23	One Way Valve	1	071001060011
22	Strainer	2	035021060018
21	Electronic Expansion Valve	1	072009000018
23	One Way Valve	1	071001060011
22	Strainer	2	035021060018
NS	Current Divider	1	06610001
NS	Fixed Block of Tube	1	708400115
51	Electric Expand Valve Fitting	1	07200206002341
50	Electric Expand Valve Fitting	1	07200206002342
11	Electric Box Assy	1	100002082082
13	Main Board/ZQ1230G-2 (AP1)	1	300027063166
NS	Wiring Terminal	1	42010264
NS	Relay	1	4402800001001
NS	Screw M4X16	4	70111006
19	Terminal Board (1)	1	42011103
18	Terminal Board (2)	1	42011147
NS	Radiator	1	43003406003306
NS	Sponge	1	110000062165
14	Fan board (AP2)	1	300094000060
25	Transformer	1	43110286
NS	Rivet M5	1	70310165
17	Terminal Board (4)	1	42200006001202
12	Main Board/WZ4K35AA (AP3)	1	300027061434
NS	High Frequency Transformer	1	450003060021
16	Terminal Board (6)	1	4201025502
15	Terminal Board (2)	1	42200006005405
NS	Jumper	1	4202021903
48	Sensor Sub-Assy	1	390002060379
NS	Sensor Insert	6	42020063
NS	Diversion Circle	1	01523901P
8	Diversion Circle	1	01523901

GK-02TC/NAA-T(U)

No.	Part Description	Qty	Part Code
9	Axial Flow Fan nesting	1	02204102
5	Rear Grill	1	01600106015001
3	Rear Grille (1)	1	01600106009901
2	Rear Grille (2)	1	01600106009601
1	Rear Grille (3)	1	01600106009701
NS	Sponge (Rear Grill)	12	12204221
43	Display Board	1	300001000204
NS	Panel	1	26904100100
NS	Temperature Sensor	1	3900800014701
NS	Capillary Tube	1	81020167
NS	Temperature Sensor Sleeving	1	05212423
46	Electrical Heater	1	7651000425
10	Brushless DC Motor/Evaporator	1	150104060129
7	Axial Flow Fan	1	103002060011