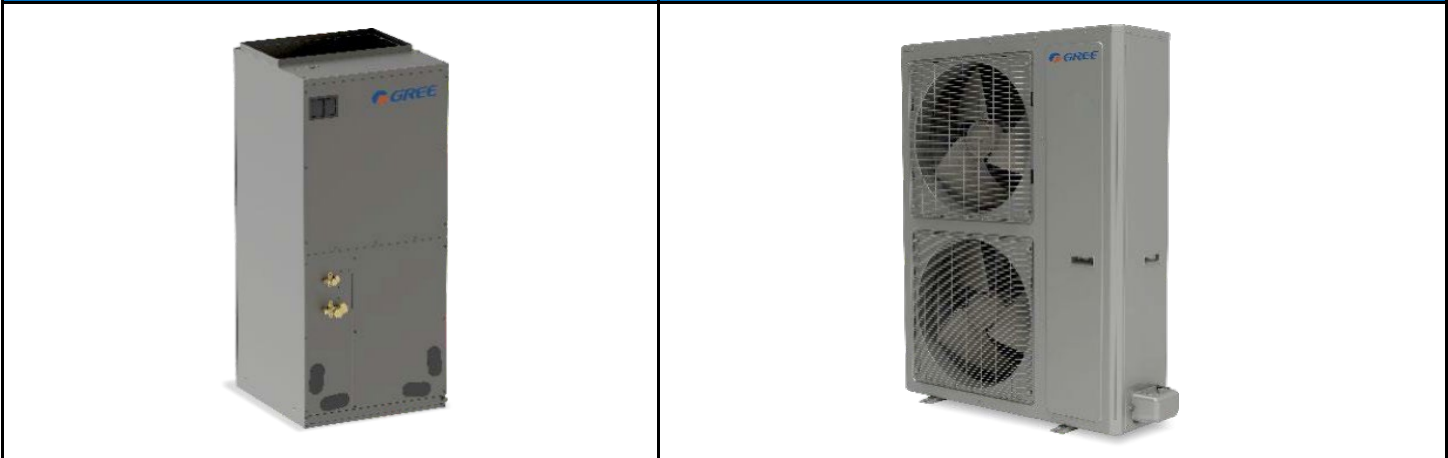




**SUBMITTAL DATA: FLEXX48HP230V1BH / FLEXX60HP230V1AO 48000 BTU/H Unitary Heat Pump Split System**

Job Name	Location	Date
Purchaser	Engineer	
Submitted To	For	
Unit Designation	Schedule No.	

<b>FLEXX48HP230V1BH</b>	<b>FLEXX60HP230V1AO</b>
-------------------------	-------------------------



**GENERAL FEATURES**

- High Efficiency DC Inverter Technology**
- Compact and Quiet 55 dB(A) Side Discharge Outdoor Unit**
- Zero Lot Line Design**
- Match with Gree or Competitive Indoor Unit**
- Designed for New Construction or Replacement Market**
- 24VAC Thermostat Compatible**
- 8 Speed Fan Motor**

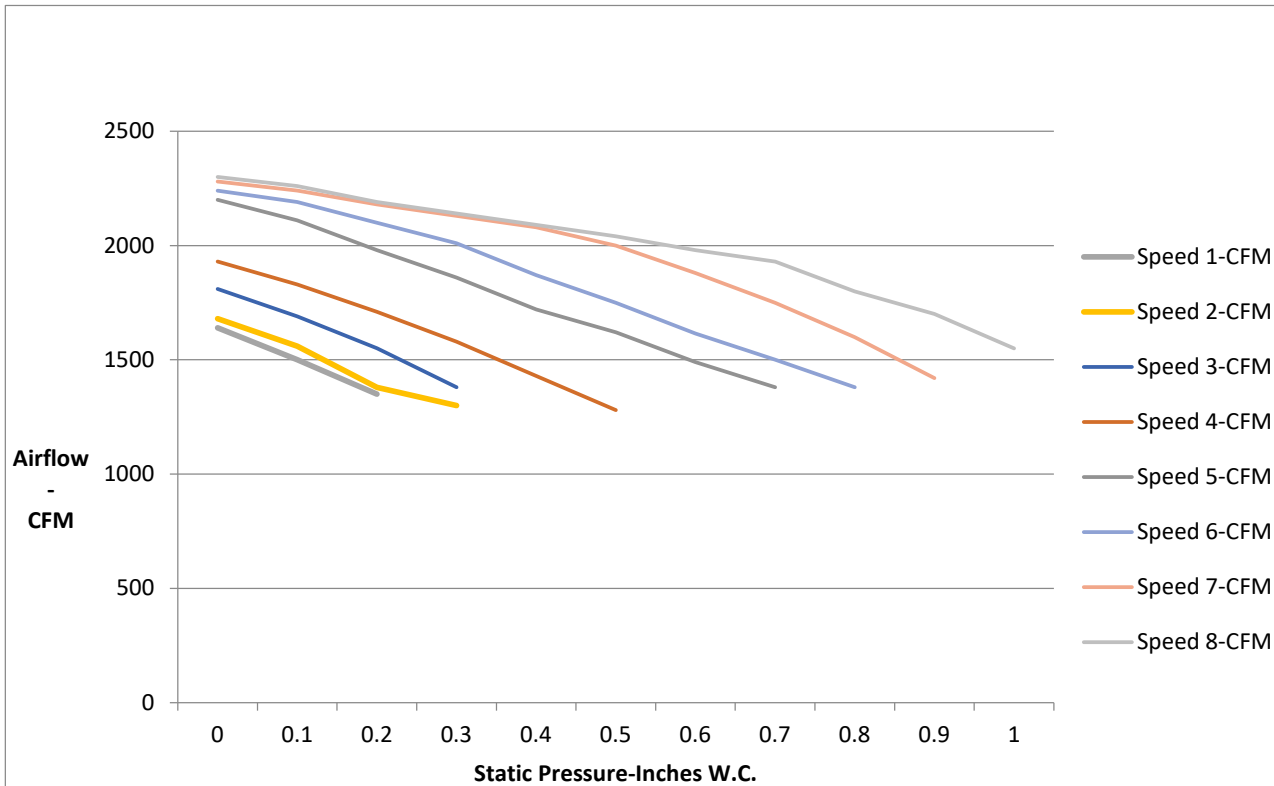
**Low Ambient Cooling down to 5°F**

**Low Ambient Heating down to -22°F**

**Acrylic Resin/Anti-Corrosion Fin Coating (Blue - 500 Hr Salt Spray Rating)**

**5 Year Limited Compressor & Parts Warranty (Residential Only)**

SPECIFICATIONS		FLEXX48HP230V1BH / FLEXX60HP230V1AO	
System Type		HEAT PUMP	
SYSTEM PERFORMANCE			
Cooling	Rated Capacity @ 95°F	Btu/h	48000
	Min-Max Capacity	Btu/h	34000 - 48000
	Rated Power Input (Min - Max)	W	
Heating	Rated Capacity @ 47°F	Btu/h	48000
	Rated Capacity @ 17°F	Btu/h	33000
	Min-Max Capacity	Btu/h	34000 - 52000
	Rated Power Input (Min - Max)	W	
SEER / EER		18 / 11	
HSPF / COP		10.5 / 3.6	
Energy Star®		NO	
Cooling Temperature Range		°F	5 - 129
Heating Temperature Range		°F	-22 - 75
INDOOR UNIT		FLEXX48HP230V1BH	
Fan Motor Output Power		W	746
Fan Motor FLA		amps	5
Air Flow (Min - Max)		CFM	1380
Static Pressure (Rated / Maximum)		In w.c	0.2 / 1.0
Sound Pressure Level (Cooling / Heating)		dB(A)	50
Dehumidification		pt/hr	9.94
Condensate Drain Size (OD)		in	3 / 4
Unit Dimension (WxHxD)		in	24 3/4 x 57 x 21 1/4
Package Dimension (WxHxD)		in	27 5/16 x 59 3/8 x 26
Weight (Net / Gross)		lbs	202 / 218
Electric Heater (Optional)		kW	10, 15, 20
OUTDOOR UNIT		FLEXX60HP230V1AO	
Compressor Type		Inverter Rotary	
Compressor RLA		amps	19
Fan Motor Output Power		W	149
Fan Motor (2)		amps	1.5 Ea
Sound Pressure Level (Cooling / Heating)		dB(A)	58
Unit Dimension (WxHxD)		in	39 3/8 x 53 5/8 x 14 1/2
Package Dimension (WxHxD)		in	45 7/16 x 59 1/4 x 19 7/16
Weight (Net / Gross)		lbs	308 / 337
Refrigerant Charge - R410A		oz	220.5
Coil Type (Blue Fin)		Copper Tube / Aluminum Fin	
REFRIGERANT PIPING			
Line Set Size (Liquid - Gas)		in	3/8 - 3/4
Pre-Charge Length		ft	31
Additional Charge		oz/ft	0.32
Pipe Length (Min - Max)		ft	10 - 100
Max. Pipe Elevation		ft	50
ELECTRICAL			
Power Supply (Voltage Operating Range)		208/230V / 1Ph / 60 Hz	
Outdoor Unit	Rated Current (Cooling / Heating)	amps	30 / 31
	MCA / MOCP	amps	35 / 45
Indoor Unit	Rated Current (Cooling / Heating)	amps	5 / 5
	MCA / MOCP	amps	8 / 15
Main Power Wire Size		AWG	Size Per Local Code
LIMITED WARRANTY		5 Years Parts and Compressor - Residential	



Static Pressure-Inches W.C.	0	0.1	0.15	0.2	0.3	0.4	0.5	0.6	0.7	0.8	0.9	1.0
Speed 1-CFM	1640	1500	1450	1350								
Speed 2-CFM	1680	1560	1500	1380	1300							
Speed 3-CFM	1810	1690	1620	1550	1380							
Speed 4-CFM	1930	1830	1770	1710	1580	1430	1280					
Speed 5-CFM	2200	2110	2040	1980	1860	1720	1620	1490	1380			
Speed 6-CFM	2240	2190	2145	2100	2010	1870	1750	1615	1500	1380		
Speed 7-CFM	2280	2240	2200	2180	2130	2080	2000	1880	1750	1600	1420	
Speed 8-CFM	2300	2260	2220	2190	2140	2090	2040	1980	1930	1800	1700	1550

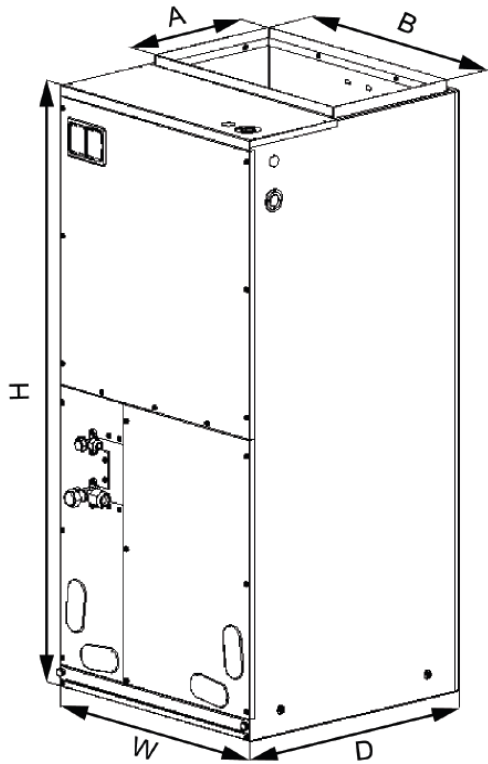
**EXTENDED RATINGS**

**FLEXX48HP230V1BH / FLEXX60HP230V1AO**

COOLING PERFORMANCE						HEATING PERFORMANCE				
Outdoor Ambient Temperature (DB)		Return Air Temperature				Outdoor Ambient Temperature (DB)		Return Air Temperature		
		80°F (DB)						70°F (DB)		
		TC (Btu/h)	SHR	EER	Power Input (W)			TC (Btu/h)	COP	Power Input (W)
<b>MAX OUTPUT</b>	5°F	48000	71.5%	15.74	3050	<b>MAX OUTPUT</b>	-22°F	26400	1.36	5700
	10°F	48000	73.8%	15.53	3090		-20°F	27000	1.37	5800
	15°F	48000	73.0%	15.38	3120		-15°F	28500	1.42	5900
	20°F	48000	74.0%	15.29	3140		-10°F	32000	1.55	6050
	25°F	48000	74.6%	15.19	3160		-5°F	34200	1.62	6200
	30°F	48000	72.8%	15.14	3170		0°F	38000	1.71	6500
	35°F	48000	73.9%	15.00	3200		5°F	43000	1.82	6920
	40°F	48000	72.5%	14.72	3260		10°F	45000	1.91	6900
	45°F	48000	74.2%	14.41	3330		15°F	47000	2.00	6890
	50°F	48000	73.0%	14.12	3400		17°F	48000	2.05	6880
	55°F	48000	73.8%	13.71	3500		20°F	48000	2.17	6500
	60°F	48000	74.0%	13.22	3630		25°F	48000	2.27	6200
	65°F	48000	73.0%	12.80	3750		30°F	48000	2.41	5850
	70°F	48000	74.5%	12.63	3800		35°F	48000	2.56	5500
	75°F	48000	72.8%	12.47	3850		40°F	48000	2.82	5000
	80°F	48000	73.4%	12.06	3980		45°F	49000	3.19	4500
	85°F	48900	72.5%	11.93	4100		47°F	50000	3.48	4210
	90°F	48900	74.7%	11.11	4400		50°F	50000	3.49	4200
	95°F	48900	73.0%	10.36	4720		55°F	51000	3.52	4250
	100°F	48900	73.8%	9.78	5000		60°F	52000	3.55	4300
	105°F	48000	72.0%	9.06	5300		65°F	52000	3.56	4280
110°F	46000	73.9%	9.02	5100	70°F	52000	3.59	4250		
115°F	43500	74.0%	8.95	4860	75°F	48000	3.66	3850		
120°F	36000	71.7%	8.00	4500						
125°F	31000	70.6%	7.05	4400						
129°F	27000	71.0%	6.21	4350						

**LEGEND:** W - Watts  
 DB - Dry Bulb  
 TC - Total Capacity  
 SHR - Sensible Heat Ratio  
 COP - Coefficient of Performance

SYSTEM FEATURES	
Compressor	Inverter
Ultra Low Frequency Torque Control	YES
Power Factor Correction	YES
Compressor Type	Rotary
Refrigerant Type	R410A
Outdoor Electronic Expansion Valve (EEV)	YES
Indoor TXV Control	YES
Basepan With Electric Heater	YES
Compressor With Electric Heater	YES
Fin Coating (Outdoor & Indoor)	Acrylic Resin
Intelligent Defrosting	YES
Intelligent Preheating	YES
Low Voltage Startup	YES
Memory/Power Failure Recovery	YES
Self Diagnosis	YES
Low Ambient Cooling	YES
24VAC Thermostat Compatible	YES
Indoor Fan Type	Centrifugal
Multi Fan Speeds	8 Speeds
Auxiliary Electrical Heater	Optional



Dimensions	
A	11 5/8
B	20
H	57
W	24 3/4
D	21 1/4

Filter Size	
Supplied*	20 5/8 x 20 5/16 x 1/2
Suggested	20 5/8 x 20 5/16 x 1

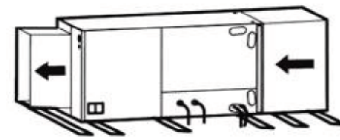
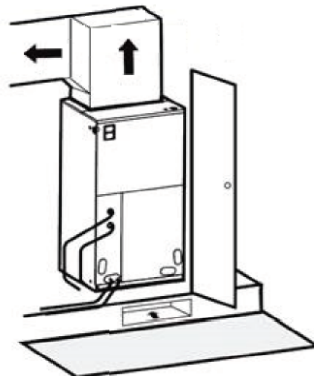
\*Supplied filter is metal mesh

Clearances	
Front	> 24

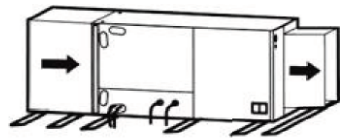
Allow a minimum of 24" in front of the unit for service clearance. When installing in an area directly over a finished ceiling (such as an attic), an emergency drain pan is required directly under the unit. **See local and state codes for requirements.** When installing this unit in an area that may become wet, elevate the unit with a sturdy, non-porous material. In installations that may lead to physical damage (i.e. a garage) it is advised to install a protective barrier to prevent such damage.

This air handler is designed for a complete supply and return ductwork system.

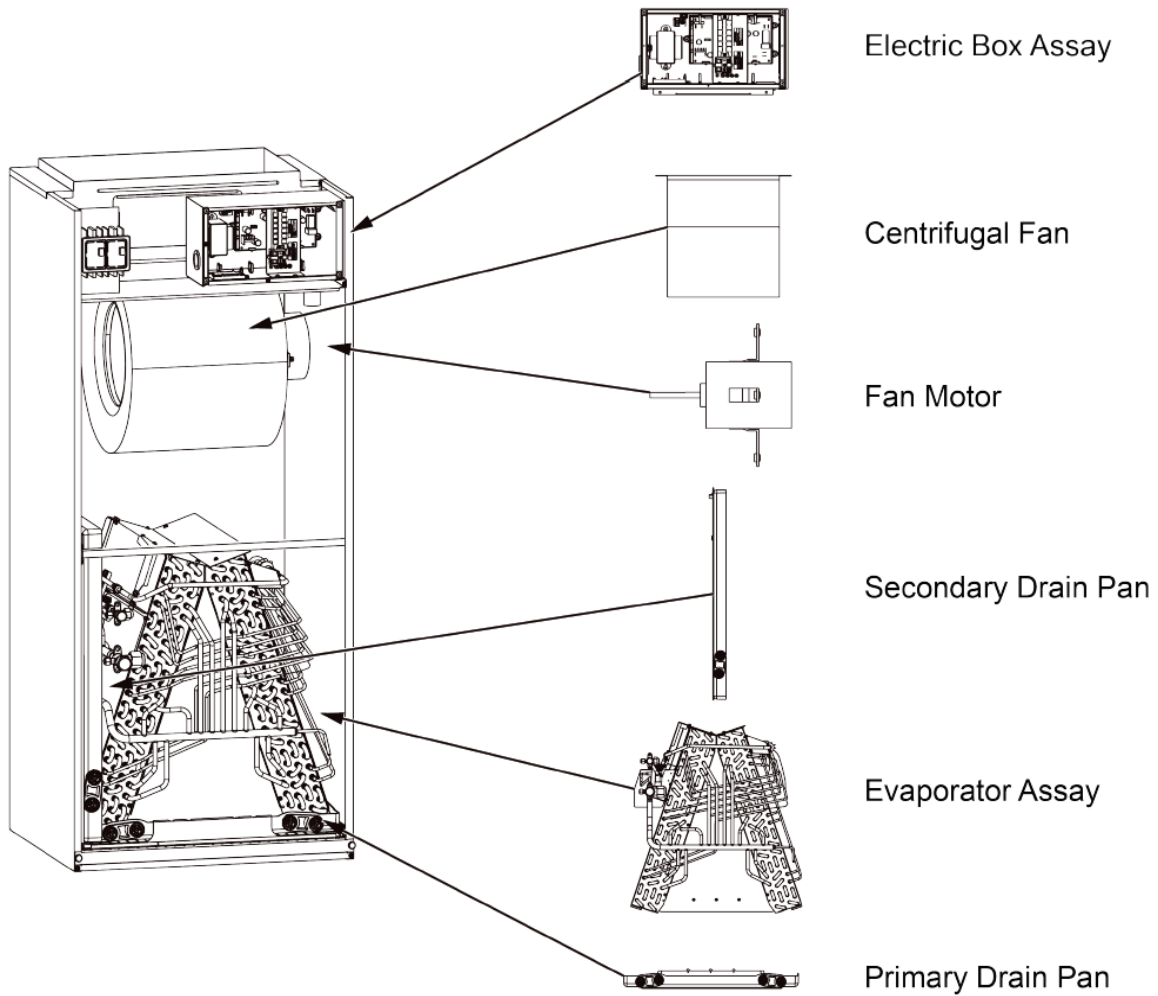
**Multi-Position Capabilities**



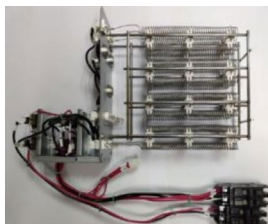
Horizontal Left Configuration - No Modification Needed

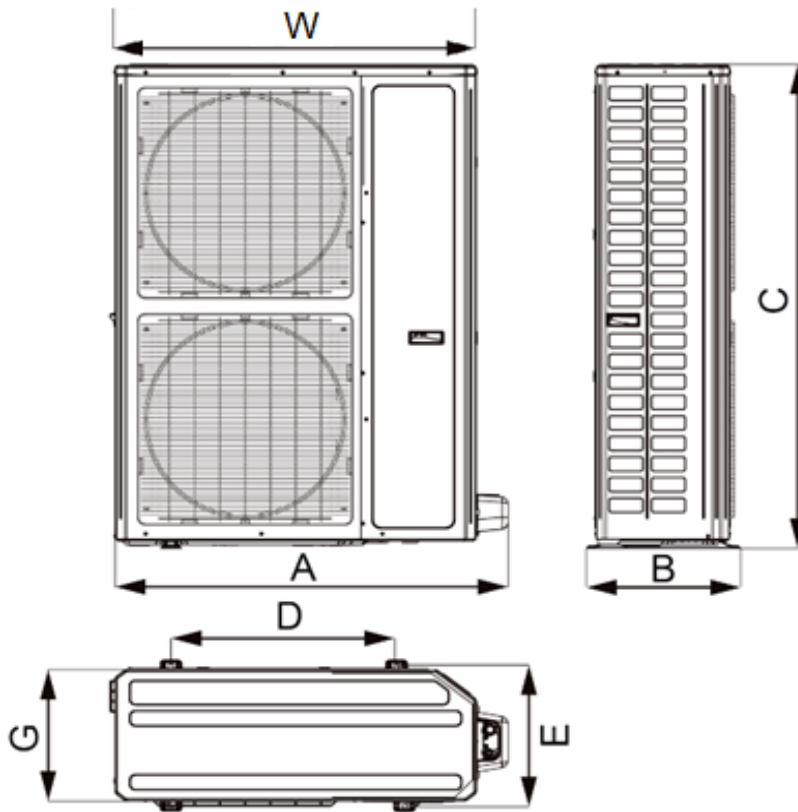


Horizontal Right Configuration - Must Relocate Drain Pan

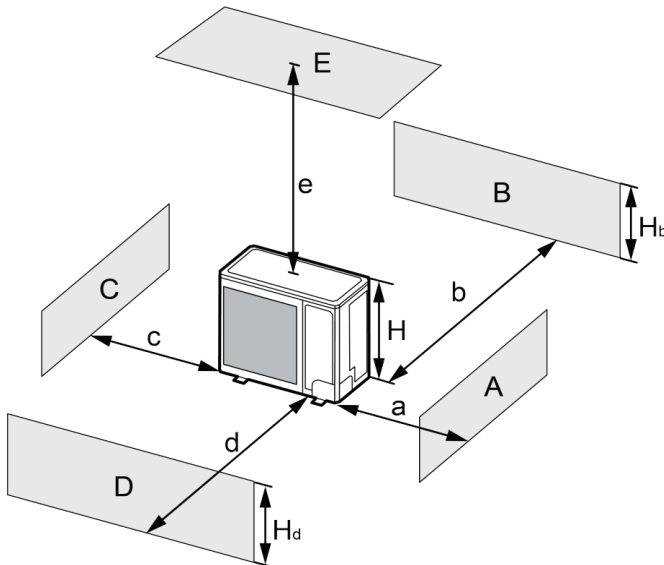


Model	Heat Kit Model	Electric Heat (kW)		Min. Circuit Ampacity Heater Only		Max.Fuse or Breaker Ampacity Heater Only	
		240V	208V	240V	208V	240V	208V
FLEXX48HP230V1BH	FLEXXHTR10KW	10	7.51	52	45	60	45
	FLEXXHTR15KW	15	11.25	52 & 26	45 & 22.6	60 & 30	45 & 25
	FLEXXHTR20KW	20	15.02	52 & 52	45 & 45	60 & 60	45 & 45
	21-4216-01	10	7.51	52	45	60	45
	21-4217-00	15	11.25	52 & 26	45 & 22.6	60 & 30	45 & 25
	21-4228-00	20	15.02	52 & 52	45 & 45	60 & 60	45 & 45





Dimensions	
A	42 3/4
B	16 7/8
C	53 5/8
D	24 3/8
E	15 5/8
G	14 1/2
W	39 3/8



A-E	H <sub>b</sub>	H <sub>d</sub>	H	(in)				
				a	b	c	d	e
B	—	—	—	-	≥ 4	-	-	-
A,B,C	—	—	—	≥ 12	≥ 4	≥ 4	-	-
B,E	—	—	—	-	≥ 4	-	-	≥ 40
A,B,C,E	—	—	—	≥ 12	≥ 6	≥ 6	-	≥ 40
D	—	—	—	-	-	-	≥ 40	-
D,E	—	—	—	-	-	-	≥ 40	≥ 40
B,D	H <sub>b</sub> < H <sub>d</sub>	H <sub>d</sub> > H	-	≥ 4	-	≥ 40	-	-
	H <sub>b</sub> > H <sub>d</sub>	H <sub>d</sub> < H	-	≥ 4	-	≥ 40	-	-
B,D,E	H <sub>b</sub> < H <sub>d</sub>	H <sub>d</sub> ≤ 1/2H	-	≥ 10	-	≥ 80	≥ 40	-
		1/2H < H <sub>d</sub> ≤ H	-	≥ 10	-	≥ 80	≥ 40	-
	H <sub>b</sub> > H	Prohibited					-	-
	H <sub>b</sub> > H <sub>d</sub>	H <sub>d</sub> ≤ 1/2H	-	≥ 4	-	≥ 80	≥ 40	-
		1/2H < H <sub>d</sub> ≤ H	-	≥ 8	-	≥ 80	≥ 40	-
H <sub>d</sub> > H	Prohibited					-	-	

Specifications are subject to change without notice. Manufacturer reserves the right to discontinue or modify specifications or designs without notice or without incurring obligations. All Rights reserved.