



SUPER⁺
MULTI ULTRA



PARTS MANUAL

Outdoor Unit

MODELS:

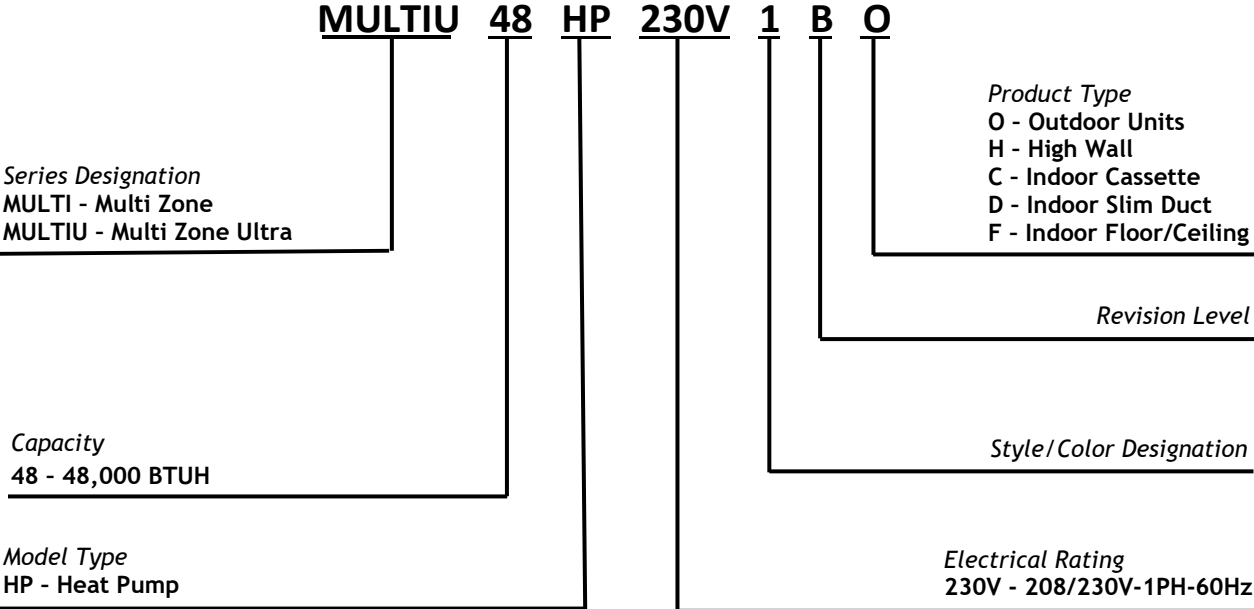
MULTIU48HP230V1BO

Thank you for choosing our product.
Please read this Parts Manual carefully before operation and
retain it for future reference.

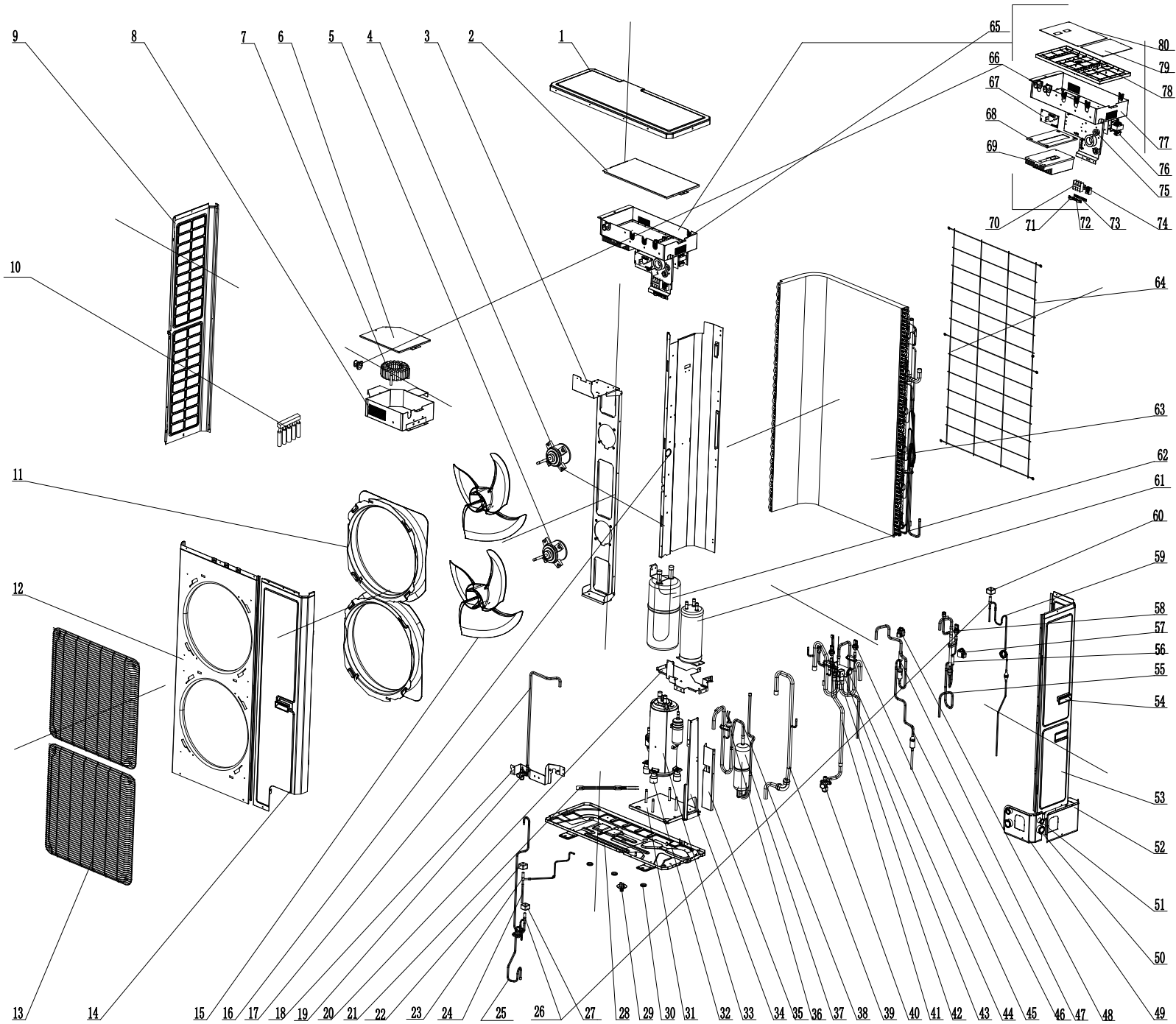
If you lose this Manual, please contact your local distributor or
visit www.greecomcomfort.com/resources now to download and
file the electronic version.

Nomenclature

EXAMPLE: MULTIU48HP230V1BO



MULTIU48HP230V1BO



MULTIU48HP230V1BO

NO.	Part Description	Qty	Part Code
1	Coping Sub-Assy	1	000051000055
2	Electric Box Cover	1	012020000071
3	Motor Support Sub-Assy	1	017012000032
4	Fan Motor	1	15704100013
5	Brushless DC Motor	1	1570410001301
6	Inductance Box Cover	1	012081000003
7	PFC Inductance	1	340032000005
8	Inductance Box Sub-assy	1	01394100625
9	Left Side Plate	1	01314100013P
10	Sensor Sub-assy	1	39008000141G
11	Diversion Circle	2	10474100001
12	Cabinet Assy	1	000006000004
13	Front Grill	2	016004060002
14	Front Side Plate	1	01314100012P
15	Axial Flow Fan	2	1043410000301
16	Clapboard Sub-Assy	1	01244100043
17	Cut off Valve Sub-Assy	1	07334100077
18	Joint Plank groupware	1	01344100113
19	Cut off Valve	1	07330000002
20	Underlay groupware	1	01894100090
21	Electrical Heater	1	7651521215
22	Magnet Coil	1	4304000433
23	Electromagnetic Valve	1	43000054
24	Electromagnetic Valve groupware	1	43044100234
25	Electromagnetic Valve groupware	1	43044100232
26	Electromagnetic Valve	2	43003091
27	Magnet Coil	1	43040004
28	Chassis Sub-assy	1	01194100115P
29	Drainage Connector	1	06123401
30	Drainage hole Cap	3	06813401
31	Fixity groupware (Compressor)	1	01844100082P
32	Compressor Gasket	4	009012000013
33	Compressor and Fittings	1	00204100030
34	Underlay	1	01894100088
35	Underlay	1	01854100009
36	Pressure Protect Switch	1	4602000910
37	Oil Separator	1	07424105
38	Discharge Tube Sub-assy	1	04514100561
39	Inhalation Tube Sub-assy	1	04574100170
40	Cut off Valve	1	07334100079
41	4-Way Valve Assy	1	030152000095
42	Sensing Device	1	322101006
43	Magnet Coil	1	4304000431
44	4-way Valve	1	43000338
45	Pressure Sensor(High Pressure)	1	322101038

MULTIU48HP230V1BO

46	Electric Expansion Valve Sub-Assy	1	43044100233
47	Electronic Expansion Valve	1	43044100172
48	Electric Expand Valve Fitting	1	4304413205
49	Front Connection Board	1	01344100002P
50	Gland Bush	2	26904100134
51	Gland Bush	2	26904100134
N/A	Pipe for wire	2	26904100132
52	Right Connection Board	1	01344100003P
53	Rear Side Plate	1	01314100014P
54	Handle	2	26904100016
55	Pipeline groupware	1	030205000005
56	Electronic Expansion Valve	1	43044100173
57	Electric Expand Valve Fitting	1	4304413220
58	Pressure Sensor(High Pressure)	1	322101036
59	Oil Returning Pipe Sub-assy	1	04224100556
60	Magnet Coil	1	4304000415
61	Accumulator	1	07424100031
62	Gas-liquid Separator	1	07424140
63	Condenser Assy	1	0112410016101
64	Rear Grill	1	01574100004
65	Electric Box Assy	1	100002002890
66	Cable Cross Loop	7	76512008
67	Testing Board	1	30118000067
68	Module Support	1	26904100087
69	Radiator	1	49018000136
70	Terminal Board	1	422000000015
71	Wire Clamp	1	71010005
72	Wire Clamp	1	71010103
73	Insulation Gasket	1	70410503
N/A	Insulation Gasket	1	70410006
74	Terminal Board	1	420001000001
75	Cable Cross Loop	2	76515202
N/A	Cable Cross Loop	2	76510021
76	Reactor	1	43138000047
77	Electric Box Sub-Assy	1	01394100626
78	Electric Box	1	26904100086
79	Main Board	1	300027000425
80	Main Board	1	30224100009



U.S. CONTACT INFORMATION TRADEWINDS, LLC

E-mail: info@twclimate.com

Contractor Support: 888-850-7928 | Mon-Fri 8 AM - 5 PM EDT

GREECOMFORT.COM