



# MULTI21<sup>+</sup>



## PARTS MANUAL

### OUTDOOR UNIT

#### MODEL NUMBERS

MULTI18HP230V1CO  
MULTI24HP230V1CO  
MULTI30HP230V1CO  
MULTI36HP230V1CO  
MULTI42HP230V1CO

Thank you for choosing our product.  
Please read this Parts Manual carefully before operation and  
retain it for future reference.

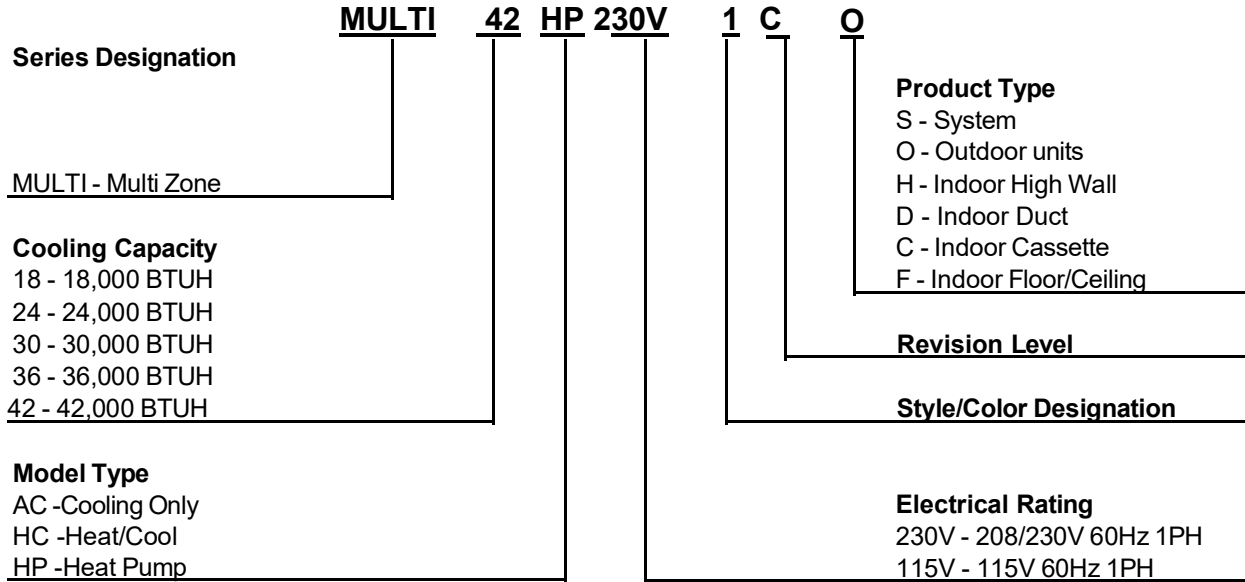
If you lose this Manual, please contact your local distributor or  
visit [www.greecomcomfort.com/resources](http://www.greecomcomfort.com/resources) now to download and  
file the electronic version.

# Table of Contents

<b>Model Number</b>	<b>Description</b>	<b>Page</b>
Nomenclature	Part Number Nomenclature Chart	3
MULTI18HP230V1CO	Multi21+ Heat Pump 18,000 BTUH 230v Outdoor Unit	4
MULTI24HP230V1CO	Multi21+ Heat Pump 24,000 BTUH 230v Outdoor Unit	7
MULTI30HP230V1CO	Multi21+ Heat Pump 30,000 BTUH 230v Outdoor Unit	10
MULTI36HP230V1CO	Multi21+ Heat Pump 36,000 BTUH 230v Outdoor Unit	13
MULTI42HP230V1CO	Multi21+ Heat Pump 42,000 BTUH 230v Outdoor Unit	16

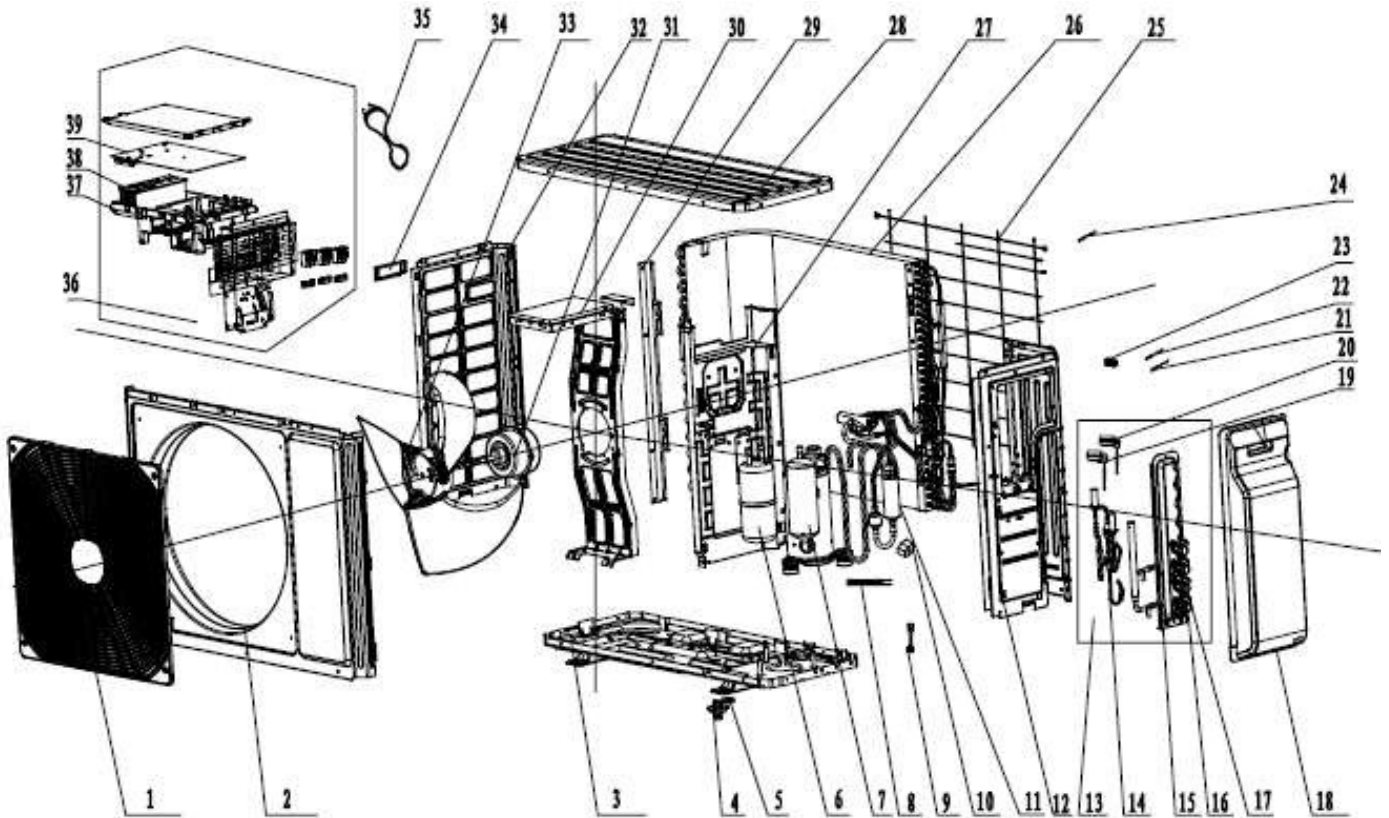
# Product Catalog Number-Nomenclature

Example: **MULTI42HP230V1CO**



# MULTI18HP230V1CO

## 18,000 BTUH 230v Outdoor Unit



## MULTI18HP230V1CO

### 18,000 BTUH 230v Outdoor Unit

NO.	Part Code	Part Description	Qty
1	01473049	Front Grille	1
2	00000300024	Front Panel Assy	1
3	02803263P	Chassis Sub-Assy	1
4	06123401	Drain Connector	1
5	06813401	Drain Plug	1
Not Shown	765100045	Basepan Electric Heater	1
6	07223048	Gas-Liquid Separator	1
7	00105249G	Compressor and Fittings	1
Not Shown	00180030	Compressor Overload Protector(External)	1
Not Shown	00183032	Compressor Overload Protector(External)	1
Not Shown	00183051	Compressor Overload Protector(External)	1
8	7651300403	Compressor Crankcase Heater	1
9	NA	Tube Connector Sub-Assy	1
10	4300040045	Magnet Coil	1
11	03073328	4-Way Valve Assy	1
Not Shown	430004032	4-Way Valve	1
Not Shown	4300040045	4-Way Valve Solenoid Coil	1
12	0130329205	Right Side Plate Assy	1
13	03016300003	Valve Support Assy	1
14	03017400020	Electronic Expansion Valve Assy	1
Not Shown	07130369	Electronic Expansion Valve (Port A & B)	2
15	0171312802P	Valve Support Sub-Assy	1
16	071302391	3/8-in Gas/Suction Valve (Port A & B)	1
17	07130239	1/4-in Liquid Line Valve (Port A & B)	1
18	NA	Service Valve Cover	1
19	4300008401	Port A Electronic Expansion Valve Solenoid Coil	1
20	43000084	Port B Electronic Expansion Valve Solenoid Coil	1
21	3900007301	Port B Temperature Sensor Assembly***	1
22	39000073	Port A Temperature Sensor Assembly***	1
23	26115004	Wiring Clamp	1
24	3900030901	Temperature Sensor Assembly**	1
25	01473043	Rear Grille	1
26	01163938_L62661	Condenser Coil Assy	1
27	0123315301	Clapboard Assy	1
28	000051000017	Top Cover Panel	1
29	01795010	Condenser Supporting Board	1
30	01705036	Motor Support Sub-Assy	1

\*\* Temperature Sensor Assembly contains Discharge, Coil, & Ambient sensors.

\*\*\* Temperature Sensor Assembly contains Port Discharge & Suction Tube sensors.



## MULTI18HP230V1CO (Cont.) 18,000 BTUH 230v Outdoor Unit

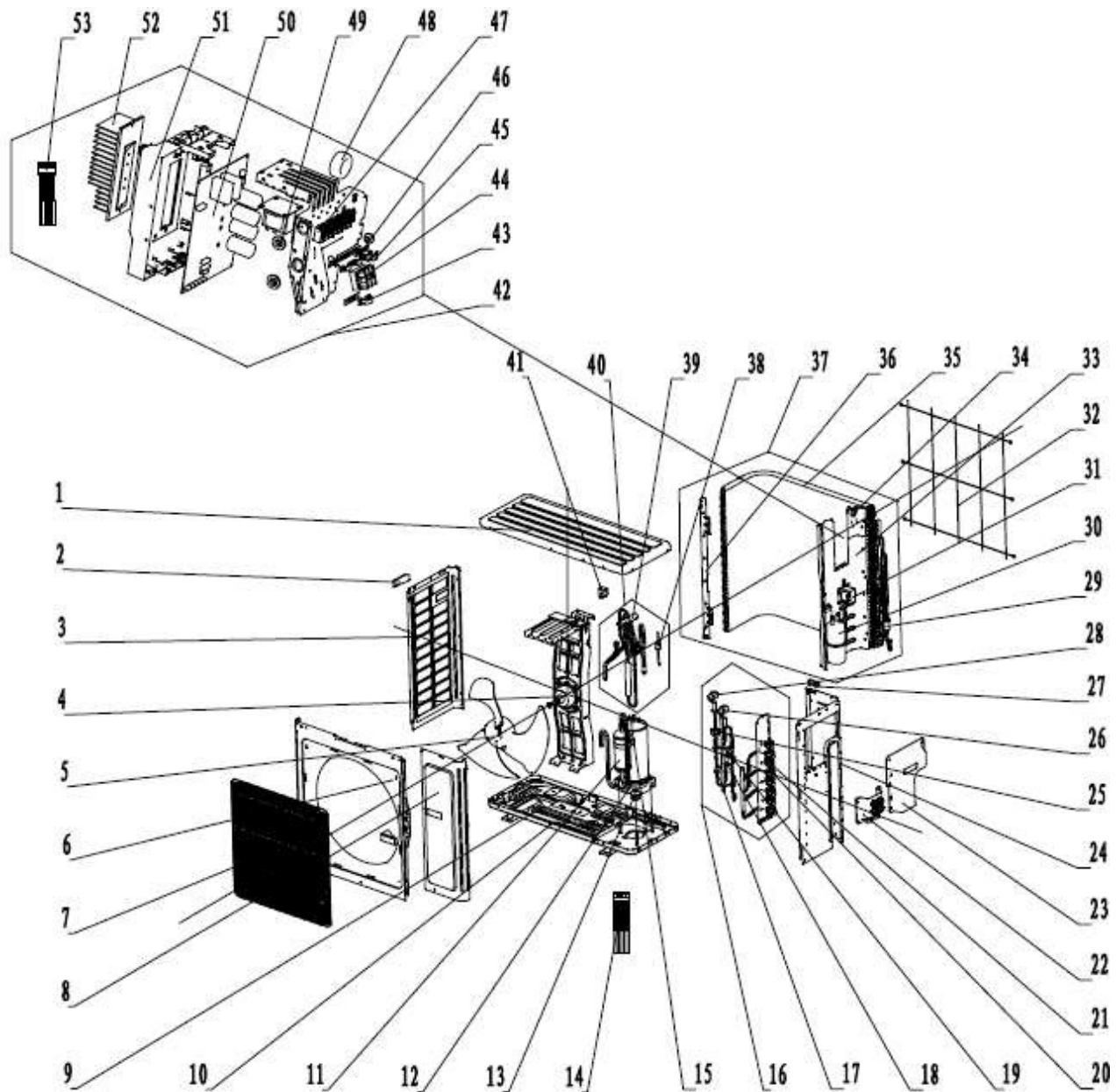
NO.	Part Code	Part Description	Qty
31	1501506402	Fan Motor	1
32	01305093P	Left Side Plate	1
33	10335008	Axial Flow Fan	1
34	NA	Left Handle	1
35	NA	Connecting Cable	1
36	10000100023	Electric Box Assy	1
37	20113027	Electric Box	1
Not Shown	43120132	Reactor	1
38	49010252	Heat Sink/Radiator	1
39	30138000310	Main Control Board	1
Not Shown	30033089	Noise Filter Board	1
Not Shown	200087000004	Service Valve Cover	1
Not Shown	06643008	Adapter Pipes 3/8-in to 1/2-in	1

\*\* Temperature Sensor Assembly contains Discharge, Coil, & Ambient sensors.

\*\*\* Temperature Sensor Assembly contains Port Discharge & Suction Tube sensors.

# MULTI24HP230V1CO

## 24,000 BTUH 230v Outdoor Unit



## MULTI24HP230V1CO 24,000 BTUH 230v Outdoor Unit

NO.	Part Code	Part Description	Qty
1	01255007	Top Cover Sub-Assy	1
2	26235401	Left Handle	1
3	01305043P	Left Side Plate	1
4	15010400000102	Fan Motor	1
5	10335014	Axial Flow Fan	1
6	0153501405	Front Panel Assy	1
7	01473050	Front Grille	1
8	01305086P	Front Side Plate	1
9	7651000411	Base pan Electric Heater	1
10	02803280P	Chassis Sub-assay	1
Not Shown	06123401	Drain Connector	1
Not Shown	06813401	Drain Plug	1
11	0010524501	Compressor and Fittings	1
12	7651873215	Compressor Crankcase Heater	1
13	76713066	Compressor Grommets	3
15	00180030	Compressor Overload Protector (External)	1
Not Shown	00183032	Compressor Overload Protector (External)	1
Not Shown	00183051	Compressor Overload Protector (External)	1
16	0713395401	Valve Support Assy	1
17	0721304401	Strainer	2
18	0713395301	Electronic Expansion Valve Assy	3
Not Shown	07130369	Electronic Expansion Valve (Port A, B, & C)	3
20	071302391	3/8-in Gas/Suction Valve (Port A, B & C)	3
21	07130239	1/4-in Liquid Line Valve (Port A, B & C)	3
22	01264100034	Wiring Cover Sub-assay	1
23	02204100008	Handle Assy	1
24	0131410000901P	Right Side Plate	1
25	4300008402	Port C Electronic Expansion Valve Solenoid Coil	1
26	4300008401	Port B Electronic Expansion Valve Solenoid Coil	1
27	26115004	Wiring Clamp	1
28	43000084	Port A Electronic Expansion Valve Solenoid Coil	1
30	07223048	Gas-liquid Separator	1
31	43120129	Reactor/PFC Inductance	1
32	01574100003	Rear Grille	1
33	01233190	Clapboard Sub-Assy	1
35	0116398001_L62661	Condenser Assy	1
36	01175092	Condenser Support Plate	1
38	460200061	High Pressure Protection Switch	1
39	430004032	4-Way Valve	1
40	03015200001	4-Way Valve Assy	1



**MULTI24HP230V1CO (Cont.)**  
**24,000 BTUH 230v Outdoor Unit**

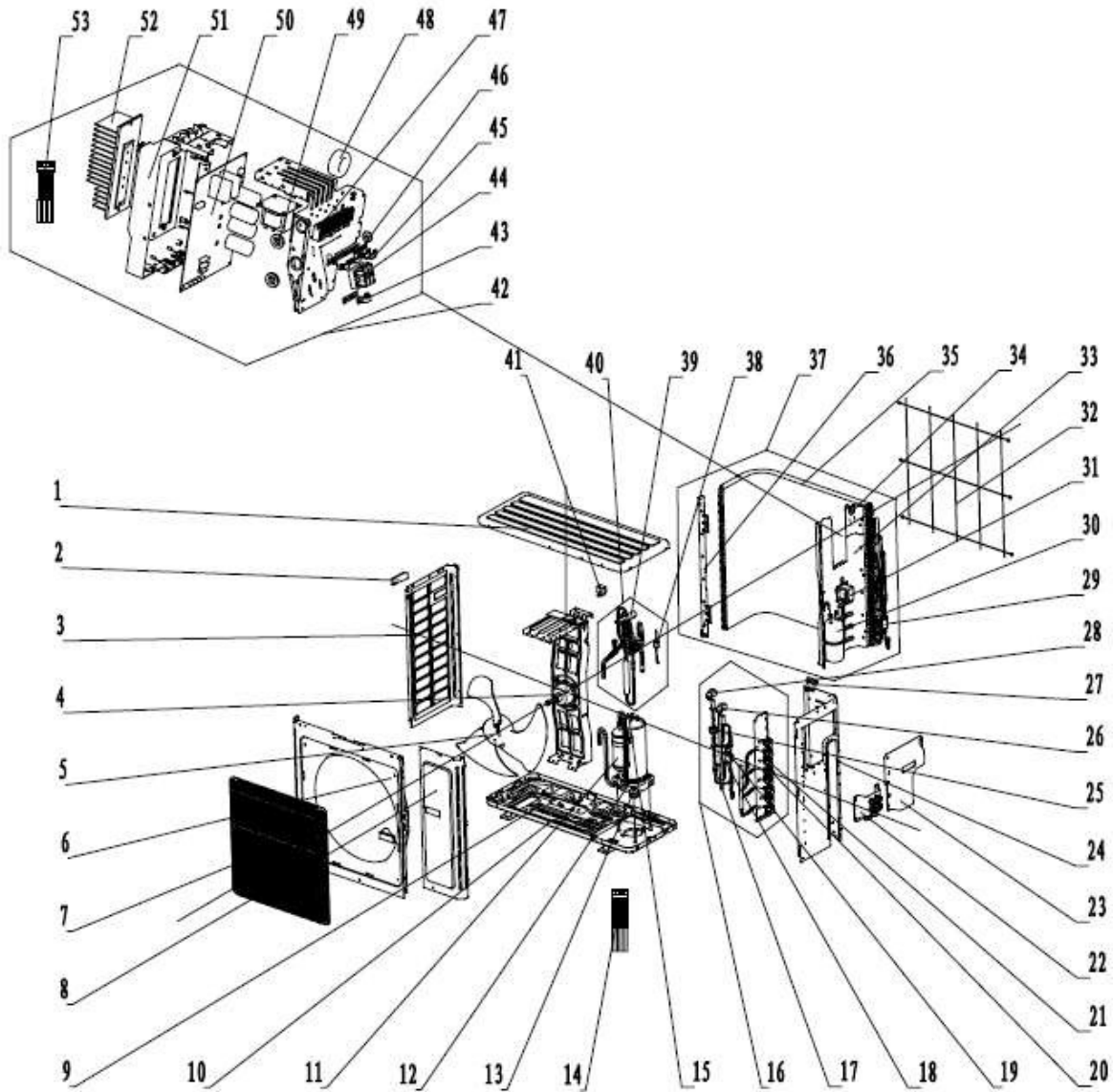
NO.	Part Code	Part Description	Qty
41	4300040045	4-Way Valve Solenoid Coil	1
42	10000100020	Electric Box Assy	1
Not Shown	02603217	Electric Box Cover	1
43	71010102	Wire Clamp	1
44	42010178	Terminal Board	1
45	71010003	Wire Clamp	3
46	70410503	Insulation Gasket	2
47	420111041	Terminal Board	3
48	49010113	Magnetic Ring	2
49	76510021	Cable Cross Loop	1
50	30138000311	Main Board	1
Not Shown	30033074	Noise Filter Board	1
51	20113015	Electric Box	1
52	49013052	Radiator	1
Not Shown	200087000006	Service Valve Cover	1
Not Shown	26115004	Wiring Clamp	1
Not Shown	3900030901	Temperature Sensor Assembly**	1
Not Shown	3900007306	Port C Temperature Sensor Assembly***	1
Not Shown	3900007305	Port B Temperature Sensor Assembly***	1
Not Shown	39000073	Port A Temperature Sensor Assembly***	1
Not Shown	06643008	Adapter Pipes 3/8-in to 1/2-in	1

\*\* Temperature Sensor Assembly contains Discharge, Coil, & Ambient sensors.

\*\*\* Temperature Sensor Assembly contains Port Discharge & Suction Tube sensors.

# MULTI30HP230V1CO

## 30,000 BTUH 208/230v Outdoor Unit



## MULTI30HP230V1CO

### 30,000 BTUH 208/230v Outdoor Unit

NO.	Part Code	Part Description	Qty
1	01264100013	Top Cover Sub-Assy	1
2	26235401	Left Handle	2
3	01305043P	Left Side Plate	1
4	15702802	Fan Motor	1
5	10335014	Axial Flow Fan	1
6	0153501405	Front Panel Assy	1
7	01473050	Front Grille	1
8	01305086P	Front Side Plate	1
9	765100047	Base Pan Electric Heater	1
10	01194100059	Chassis Assy	1
Not Shown	06123401	Drain Connector	1
Not Shown	06813401	Drain Plug	1
11	00205200003	Compressor	1
12	7651873215	Compressor Crankcase Heater	1
13	76713066	Compressor Grommet	3
14	39004100005G	Port Temperature Sensor Assembly***	4
15	00180030	Compressor Overload Protector (External)	1
Not Shown	00183032	Compressor Overload Protector (External)	1
Not Shown	00183051	Compressor Overload Protector (External)	1
16	030163000003	Valve Support Assy	1
17	07210022	Strainer A	2
18	030174000014	Electronic Expansion Valve Assy	4
Not Shown	07334447	Electronic Expansion Valve (Port A, B, C & D)	4
19	4304413222	Port D Electronic Expansion Valve Solenoid Coil	1
20	071302391	3/8-in Gas/Suction Valve (Port A, B, C & D)	4
21	07130239	1/4-in Liquid Line Valve (Port A, B, C & D)	4
22	01264100034	Wiring Cover Sub-Assy	1
23	02204100008	Handle Assy	1
24	0131410000901P	Right Side Plate	1
25	4304413234	Port A Electronic Expansion Valve Solenoid Coil	1
26	4304413235	Port B Electronic Expansion Valve Solenoid Coil	1
27	26115004	Wiring Clamp	1
28	4304413237	Port C Electronic Expansion Valve Solenoid Coil	1
29	07220016	Bidirectional Strainer	1
30	07225017	Gas-liquid Separator Assy	1

\*\* Temperature Sensor Assembly contains Discharge, Coil, & Ambient sensors.

\*\*\* Temperature Sensor Assembly contains Port Discharge & Suction Tube sensors.

## MULTI30HP230V1CO (Cont.) 30,000 BTUH 208/230v Outdoor Unit

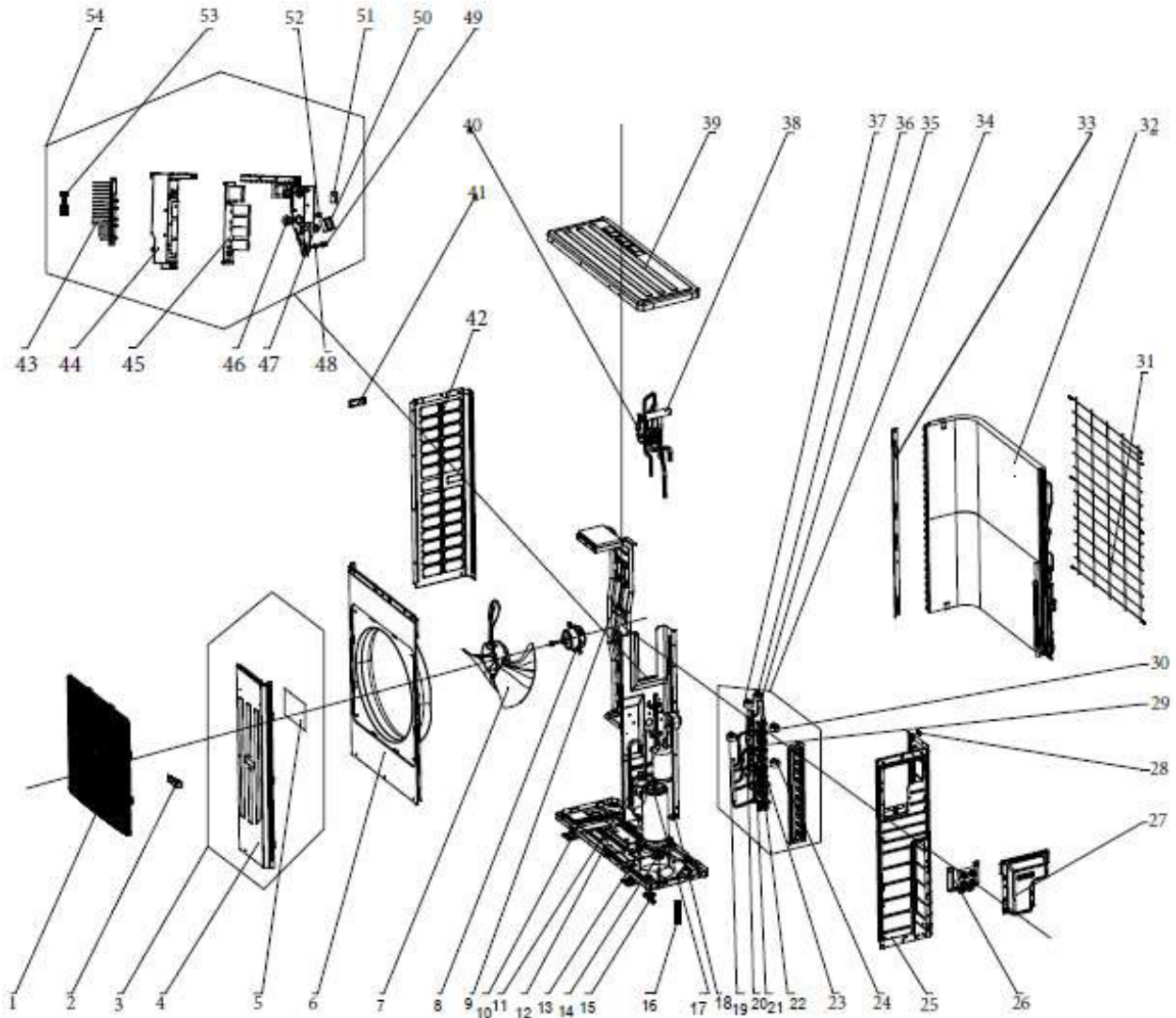
NO.	Part Code	Part Description	Qty
31	'01394100499	Reactor/PFC Inductance	2
32	01574100003	Rear Grille	1
33	01244100003	Clapboard	1
34	76512008	Cable Cross Loop	2
35	01124100007_L62661	Condenser Coil	1
36	01175092	Condenser Support Plate	1
37	01124100118_L62661	Condenser Coil Assy	1
38	4602000902	High Pressure Protect Switch	1
39	4300008201	4-Way Valve	1
40	04045200071	4-Way Valve Assy	1
41	4300040072	4-Way Valve Solenoid Coil	1
42	01395200378	Electric Box Assy	1
43	71010005	Wire Clamp	1
44	42018094	Terminal Board	1
45	71010003	Wire Clamp	4
46	70410503	Insulation Gasket	1
47	420111041	Terminal Board	4
48	49010109	Magnetic Ring	2
49	76510021	Cable Cross Loop	2
50	30228000026	Main Control Board	1
51	26904100013	Electric Box	1
52	49018000077	Heat Sink/Radiator	1
53	39008000017G	Temperature Sensor Assembly**	1
Not Shown	200087000006	Service Valve Cover	1
Not Shown	06654100009	Adapter Pipes 3/8-in to 5/8-in	2
Not Shown	06654100013	Adapter Pipes 3/8-in to 1/2-in	4
Not Shown	06654104	Adapter Pipes 1/4-in to 3/8-in	2

\*\* Temperature Sensor Assembly contains Discharge, Coil, & Ambient sensors.

\*\*\* Temperature Sensor Assembly contains Port Discharge & Suction Tube sensors.

# MULTI36HP230V1CO

## 36,000 BTUH 208/230v Outdoor Unit



## MULTI36HP230V1CO

### 36,000 BTUH 208/230v Outdoor Unit

NO.	Part Code	Part Description	Qty
1	01574106	Front Grille	1
2	26235253	Handle	1
3	01305508	Front Side Plate Sub-Assy	1
4	01305065P	Front Side Plate	1
5	20113003	Insulated Board (Cover of Electric Box)	1
6	01435007P	Cabinet	1
7	10335010	Axial Flow Fan	1
8	1570280201	Fan Motor	1
9	01805200256	Motor Support Assy	1
10	765100047	Base Pan Electric Heater	1
Not Shown	06123401	Drain Connector	1
Not Shown	06813401	Drain Plug	1
11	43130186	Reactor	2
12	00205200003	Compressor	1
13	7651873209	Compressor Crankcase Heater	1
14	76713066	Compressor Grommet	3
15	26113009	Drain Joint	1
16	39004100007G	Port Temperature Sensor Assembly***	5
17	00180030	Compressor Overload Protector (External)	1
Not Shown	00183032	Compressor Overload Protector (External)	1
Not Shown	00183051	Compressor Overload Protector (External)	1
18	70210051	Bolt	2
19	4304413222	Port E Electronic Expansion Valve Solenoid Coil	1
20	07210022	Strainer A	2
21	07220016	Bidirectional Strainer	1
22	071302391	3/8-in Gas/Suction Valve (Port A, B, C, D & E)	5
23	07130239	1/4-in Liquid Line Valve (Port A, B, C, D & E)	5
24	4304413234	Port C Electronic Expansion Valve Solenoid Coil	1
25	0131410002701P	Right Side Plate	1
26	01264100034	Wiring Cover Sub-Assy	1
27	02204100008	Handle Assy	1
28	26115004	Wiring Clamp	1
29	07130239	Cut off Valve	1
30	4304413235	Port B Electronic Expansion Valve Solenoid Coil	1

\*\* Temperature Sensor Assembly contains Discharge, Coil, & Ambient sensors.

\*\*\* Temperature Sensor Assembly contains Port Discharge & Suction Tube sensors.

## MULTI36HP230V1CO (Cont.)

### 36,000 BTUH 208/230v Outdoor Unit

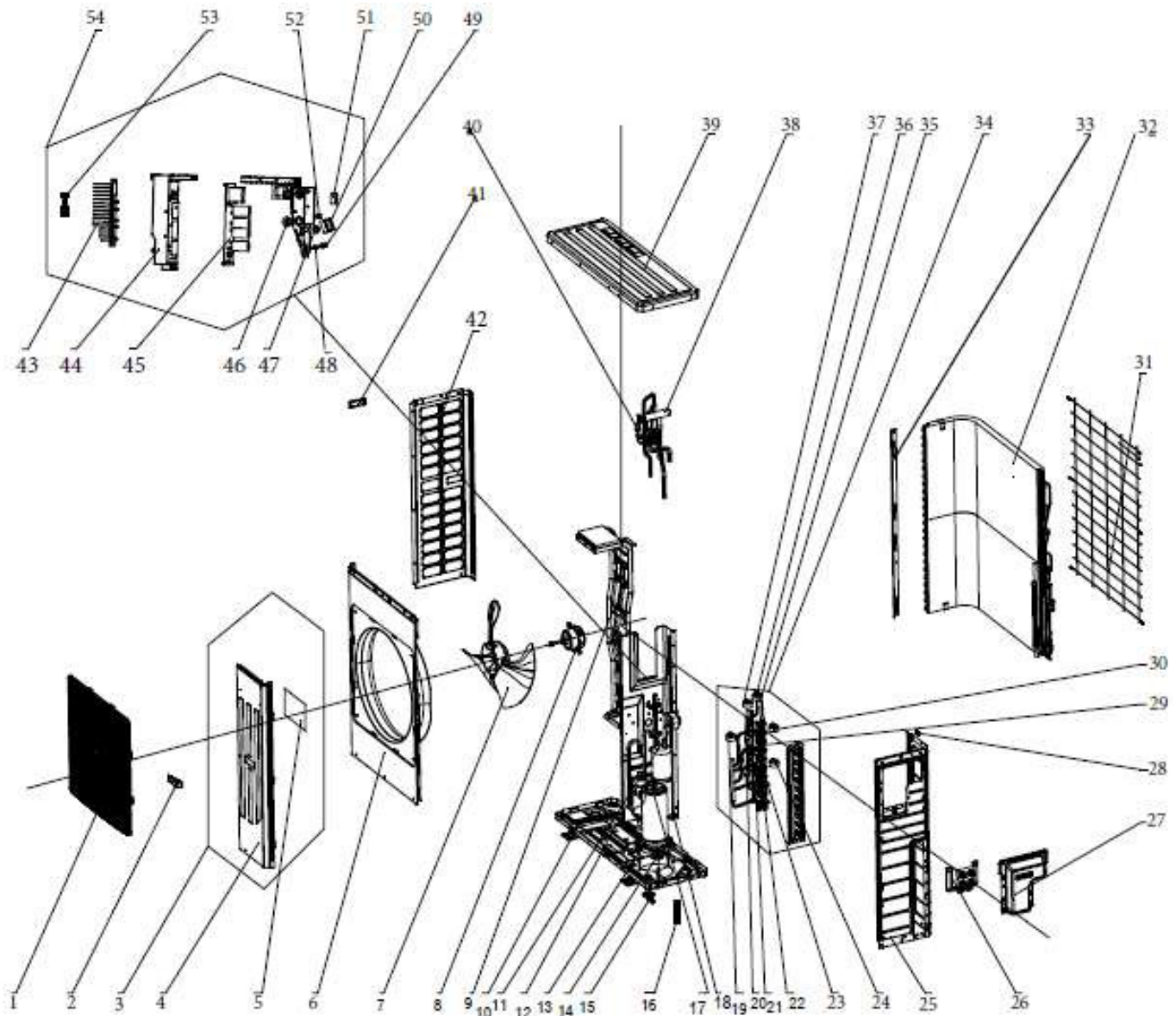
NO.	Part Code	Part Description	Qty
31	01574100007	Rear Grille	1
32	01124100116_L62661	Condenser Coil Assy	1
33	01895309	Condenser Support Plate	1
34	030163000008	Valve Support Assy	1
35	4304413237	Port A Electronic Expansion Valve Solenoid Coil	1
36	030174000020	Electronic Expansion Valve Assy	5
Not Shown	07334447	Electronic Expansion Valve (Port A, B, C, D & E)	5
37	4304413208	Port C Electronic Expansion Valve Solenoid Coil	1
38	04045200070	4-Way Valve Assy	1
Not Shown	43000338	4-Way Valve	1
Not Shown	4300040080	4-Way Valve Solenoid Coil	1
39	01264100028	Top Cover Sub-Assy	1
40	4602000902	High Pressure Protect Switch	1
41	26235401	Left Handle	1
42	01305064P	Left Side Plate	1
43	49018000077	Radiator	1
44	26904100013	Electric Box	1
45	30228000027	Main Control Board	1
46	76510021	Cable Cross Loop	2
47	49010109	Magnetic Ring	4
48	70410006	Insulation Gasket	1
49	71010005	Wire Clamp	1
50	42018094	Terminal Board	1
51	420111041	Terminal Board	5
52	71010003	Wire Clamp	5
53	39004100006G	Temperature Sensor Assembly**	1
54	01395200376	Electric Box Assy	1
Not Shown	200087000005	Service Valve Cover	1
Not Shown	20113003	Electric Control Box Cover Insulation	1
Not Shown	06654100009	Adapter Pipes 3/8-in to 5/8-in	2
Not Shown	06654100013	Adapter Pipes 3/8-in to 1/2-in	4
Not Shown	06654104	Adapter Pipes 1/4-in to 3/8-in	2

\*\* Temperature Sensor Assembly contains Discharge, Coil, & Ambient sensors.

\*\*\* Temperature Sensor Assembly contains Port Discharge & Suction Tube sensors.

# MULTI42HP230V1CO

## 42,000 BTUH 230v Outdoor Unit





## MULTI42HP230V1CO

### 42,000 BTUH 230v Outdoor Unit

NO.	Part Code	Part Description	Qty
1	01574106	Front Grille	1
2	26235253	Handle	1
3	01305508	Front Side Plate Sub-Assy	1
4	01305065P	Front Side Plate	1
5	20113003	Electric Box Insulated Board Cover	1
6	01435007P	Cabinet	1
7	10335010	Axial Flow Fan	1
8	1570280201	Fan Motor	1
9	01805200256	Motor Support Assy	1
10	765100047	Base Pan Electric Heater	1
Not Shown	06123401	Drain Connector	1
Not Shown	06813401	Drain Plug	1
11	43130186	Reactor	1
12	00205200003	Compressor	1
13	7651873209	Compressor Crankcase Heater	1
14	76713066	Compressor Grommet	3
15	26113009	Drain Joint	1
16	39004100007G	Port Temperature Sensor Assembly***	5
17	00180030	Compressor Overload Protector (External)	1
Not Shown	00183032	Compressor Overload Protector (External)	1
Not Shown	00183051	Compressor Overload Protector (External)	1
18	70210051	Bolt	2
19	4304413222	Port E Electronic Expansion Valve Solenoid Coil	1
20	07210022	Strainer A	2
21	07220016	Bidirectional Strainer	1
22	07130239	1/4-in Liquid Line Valve (Port A, B, C, D & E)	5
23	071302391	3/8-in Gas/Suction Valve (Port A, B, C, D & E)	5
24	4304413234	Port C Electronic Expansion Valve Solenoid Coil	1
25	0131410002701P	Right Side Plate	1
26	01264100034	Wiring Cover Sub-Assy	1
27	02204100008	Handle Assy	1
28	26115004	Wiring Clamp	1
29	07130239	1/4-in Liquid Line Valve (Port A, B, C, D & E)	1
30	4304413208	Port D Electronic Expansion Valve Solenoid Coil	1

\*\* Temperature Sensor Assembly contains Discharge, Coil, & Ambient sensors.

\*\*\* Temperature Sensor Assembly contains Port Discharge & Suction Tube sensors.

## MULTI42HP230V1CO (Cont.) 42,000 BTUH 230v Outdoor Unit

NO.	Part Code	Part Description	Qty
31	01574100007	Rear Grille	1
32	01124100116_K78371	Condenser Coil Assy	1
33	01895309	Condenser Support Plate	1
34	030163000008	Valve Support Assy	1
35	4304413237	Port A Electronic Expansion Valve Solenoid Coil	1
36	30174000020	Electronic Expansion Valve Assy	1
37	4304413235	Port B Electronic Expansion Valve Solenoid Coil	1
38	04045200070	4-Way Valve Assy	1
Not Shown	43000338	4-Way Valve	1
Not Shown	4300040080	4-Way Valve Solenoid Coil	1
39	01264100028	Top Cover Sub-Assy	1
40	4602000902	High Pressure Protect Switch	1
41	26235401	Left Handle	1
42	01305064P	Left Side Plate	1
43	49018000077	Heat Sink Radiator	1
44	26904100013	Electric Box	1
45	30228000025	Main Control Board	1
46	76510021	Cable Cross Loop	2
47	49010109	Magnetic Ring	4
48	70410006	Insulation Gasket	1
49	71010005	Wire Clamp	1
50	42018094	Terminal Board	1
51	420111041	Terminal Board	5
52	71010003	Wire Clamp	5
53	39004100006G	Temperature Sensor Assembly**	1
54	01395200377	Electric Box Assy	1
Not Shown	200087000005	Service Valve Cover	1
Not Shown	20113003	Electric Control Box Cover Insulation	1
Not Shown	06654100009	Adapter Pipes 3/8-in to 5/8-in	3
Not Shown	06654100013	Adapter Pipes 3/8-in to 1/2-in	4
Not Shown	06654104	Adapter Pipes 1/4-in to 3/8-in	2

\*\* Temperature Sensor Assembly contains Discharge, Coil, & Ambient sensors.

\*\*\* Temperature Sensor Assembly contains Port Discharge & Suction Tube sensors.

GREE ELECTRIC APPLIANCES INC.OF ZHUHAI  
GREECOMFORT.COM

Cat No. GREE\_MULTI21\_PARTS\_C\_01302024