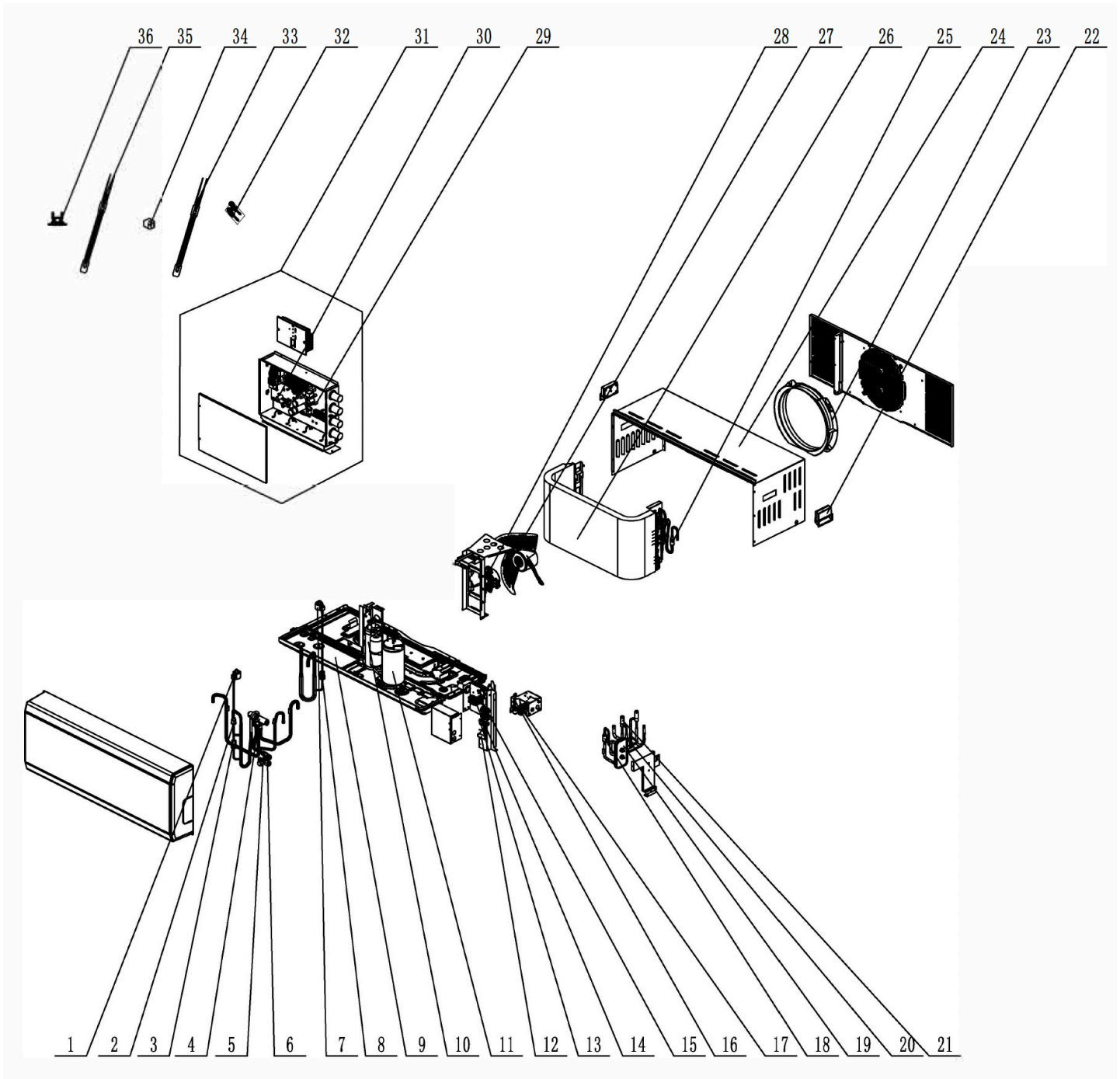


EXPLODED VIEW

GMV-12WP/A-T(U)



GMV-12WP/A-T(U)

No.	Part Description	Qty.	Part Code
9	Chassis Assy	1	209058060135
NS	Chassis Sub-Assy	1	017000060277P
35	Electrical Heater (Chassis)	1	7651000420
10	Gas-liquid Separator	1	07223048
11	Compressor and Fittings	1	00103873
36	Compressor Overload Protector (External)	1	00183043
NS	Compressor Gasket	3	76715021
33	Electrical Heater (Compressor)	1	7651350201
26	Condenser Assy	1	011002060511
NS	Current Divider	1	035032060021
5	Strainer	1	0741520000201
NS	Temp Sensor Sleeving	1	05212423
NS	Sensor Insert	1	42020063
19	Plate-type Heat Exchanger Assy	1	007023060031
NS	Plate-type Heat Exchanger Sub-Assy	1	030166060095
25	Strainer	1	07213050
NS	Plate-type Heat Exchanger Sub-Assy	1	030166060069
21	Electronic Expansion Valve UKV-18D325	1	072009000001
NS	Plate-type Heat Exchanger Sub-Assy	1	030166060068
NS	Plate-type Heat Exchanger	1	010007060010
NS	Temp Sensor Sleeving	1	05212423
NS	Current Divider	1	06615001
21	Electronic Expansion Valve UKV-18D325	1	072009000001
20	Discharge Charge Valve	1	07133771
NS	Nut with Washer	4	70310012
7	Electric Expand Valve Fitting UKV	1	4304413271
1	Electric Expand Valve Fitting UKV	1	4304413262
NS	Sensor Insert	1	42020063
NS	4-Way Valve Assy	1	030152060277
NS	Temp Sensor Sleeving	2	05212423
NS	Temp Sensor Sleeving	1	05212423
4	4-Way Valve	1	430004032
3	Pressure Sensor (High Pressure) 35CP82-04/35CP82-04	1	430044000015
2	Pressure Protect Switch YK-4.2/3.6	1	46020006
13	Cut off Valve Sub-Assy (Large)	1	030057060122
25	Strainer	1	0721212101
6	Cut off Valve (1/2)	1	07304100015
34	4 Way Valve Coil	1	4300040099
NS	Sensor Insert	3	42020063
15	Terminal Board	1	422000000015
14	Terminal Board	1	422000060004
NS	Rubber ring (wire-passing)	2	7661280501

GMV-12WP/A-T(U)

No.	Part Description	Qty.	Part Code
NS	Cut off Valve Sub-Assy (Small)	1	030057060152
6	Cut off Valve	1	070001000004
3	Pressure Sensor (Low Pressure) 35CP82-03/35CP82-03	1	430044000016
NS	Temp Sensor Sleeving	1	05212423
NS	Temperature Sensor clamp	1	02145007
NS	Motor Support Sub-Assy	1	017012060110
NS	Cable Cross Loop	1	76510021
28	Brushless DC Motor FW30J-ZL	1	1501308522
NS	Top Cover Board Sub-Assy	1	017011060081P
27	Axial Flow Fan	1	10333002
NS	Gasket 6	1	70410252
31	Electric Box Assy	1	100002065729
30	Main Board ZQ1215B (PFC)	1	300027060516
NS	Relay	1	44020348
29	Main Board WZ6L35X	1	300027060543
NS	XY capacitor	2	33020201
NS	High Frequency Transformer	1	450003060021
NS	Rubber ring (wire-passing)	4	76612805
NS	Jumper	1	4202021910
32	Sensor Sub-Assy	1	390002060093
NS	Heat Insulator	10	12128748
17	Water Pump	1	812007060052
16	Liquid Level Switch	1	43002400000503
35	Electric heater (Chassis)	1	320005060025
12	Drainage Joint	1	200038060002
NS	Cable Cross Loop	1	76510021
23	Diversion Circle	1	200150060011
24	Cabinet Assy	1	000006060026
NS	Coping	1	012049060047P
22	Handle	2	200149060003
NS	Front Panel	1	200003060116S
NS	Front Panel	1	200003060116
NS	Front Panel Clip	2	02111013
NS	Pipe Hoop	1	70812001
NS	Signal wire	1	40110142



Specifications are subject to change without notice. Manufacturer reserves the right to discontinue or modify specifications or designs without notice or without incurring obligations. All Rights reserved.

GREECOMMERCIAL.COM/SYSTEM-DOCUMENTATION